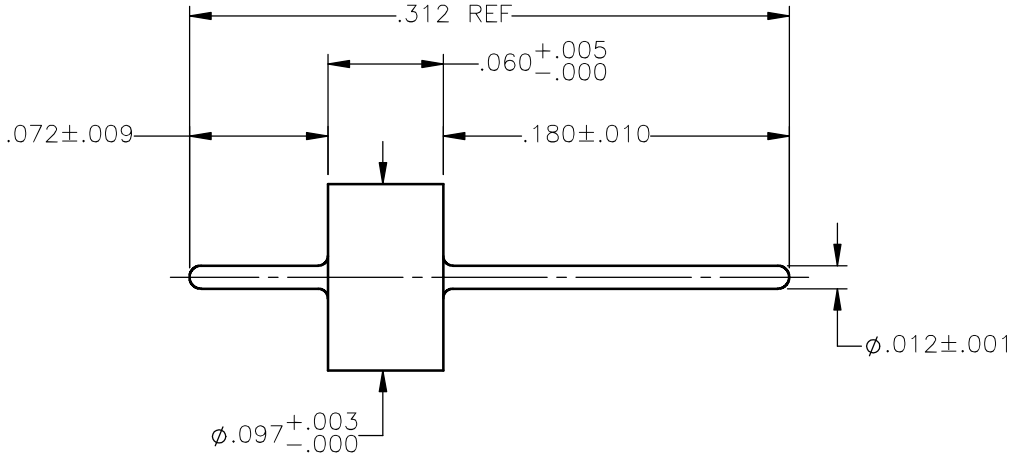


REVISIONS			
REV.	DESCRIPTION	DATE	APPROVED
A	INITIAL RELEASE	12/06/10	A.D.M
B	REDRAWN, ADDED TOLERANCES	06/22/16	J.S.
C	ADDED atm. TO NOTE 3 cc/sec	04/12/17	D.N.



NOTES:



1. MATERIALS:

1. OUTER RING AND PIN = KOVAR
2. GLASS BEAD = CORNING 7052

2. FINISHES:

1. OUTER RING AND PIN = GOLD PLATE PER MIL-G-45204, TYPE II, GRADE C, CLASS I, OVER NICKEL PER MIL-C-26074, CLASS I, OVER COPPER PER MIL-C-14550.

3. LEAK RATE TO BE LESS THEN  $1 \times 10^{-8}$  atm.cc/sec.

UNLESS OTHERWISE SPECIFIED DIMENSIONS ARE IN INCHES TOLERANCES ON	DWN: J.S.	DATE: 06/22/16	 <b>Property of Radiall</b> This document cannot be reproduced or communicated to a third party without prior written permission of RADIALL.		
	CHKD: N.D.	DATE: 06/22/16			
DECIMAL	ANGLE	APVD: J.M.	DATE: 06/22/16	<b>GLASS SEAL ASSEMBLY 50 OHM CONTROL DRAWING</b>	
REFERENCE:	MATERIALS & FINISHES: SEE NOTES	SIZE: A	FSCM NO.: 19505		DWG NO.: 920-55
ORIGINATED: A.D.M. DATE: 12/06/10		SCALE: 10:1	THIRD ANGLE PROJECTION		REV: C
			SHEET 1 OF 1		

920-55