

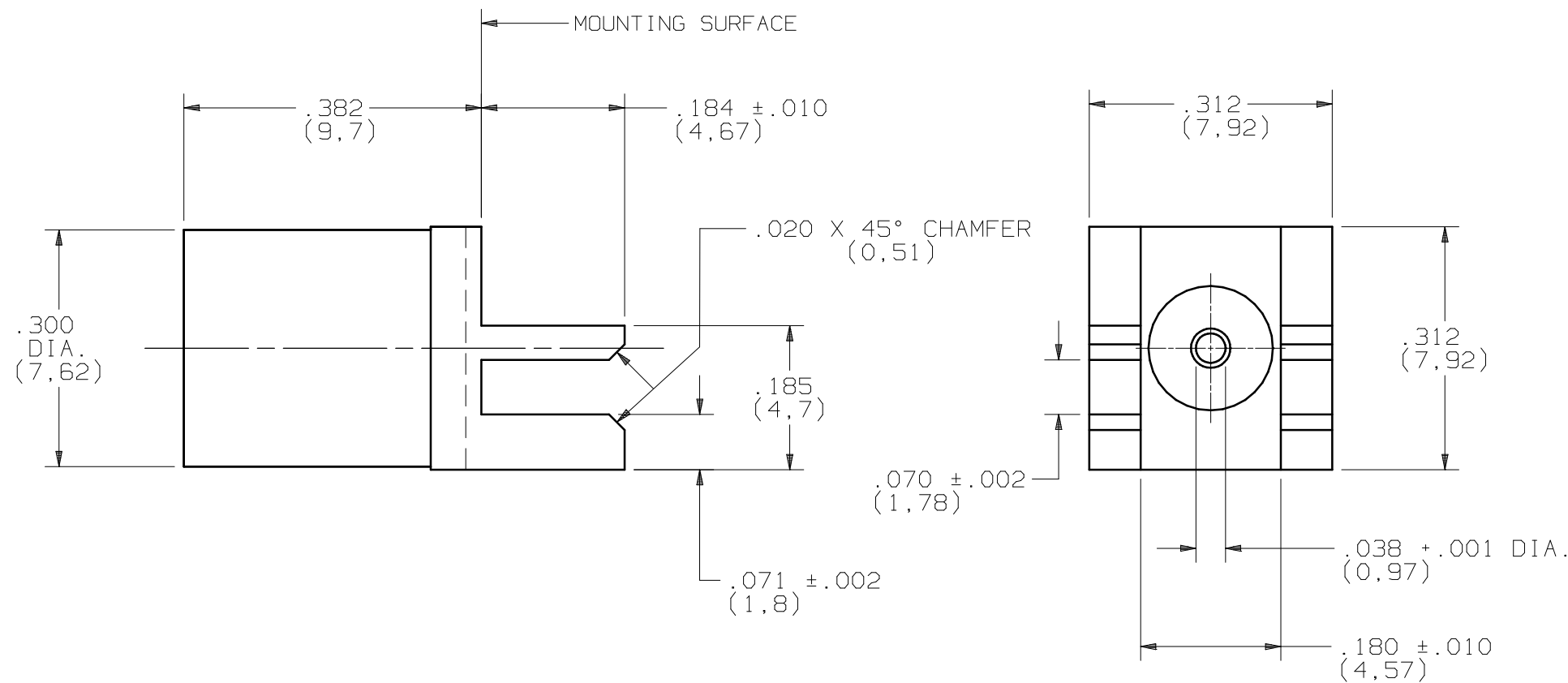
# PRODUCT DATA DRAWING

CAD  
GENERATED  
DRAWING

DCN  
CONTROLLED  
DOCUMENT

DWG. NO.

1785-0003



## MATERIAL :

BODY: BRASS PER ASTM-B-16, ALLOY UNS C36000, H02

CONTACTS: BERYLLIUM COPPER PER ASTM-B-196, ALLOY C17300, COND. TD04

OUTER CONTACT: BERYLLIUM COPPER ALLOY 25, 1/4 HARD

INSULATOR: TEFLON PER ASTM-D-1457

## FINISH :

BODY: COPPER, TIN, ZINC (TRI-M3)

CONTACTS, OUTER CONTACT: GOLD PER MIL-G-45204, TYPE I, GRADE C, CLASS 0; OVER COPPER PER MIL-C-14550, CLASS 2

## PERFORMANCE :

IMPEDANCE: 50 OHMS

DWV: 1000 VRMS

FREQ. RANGE: DC-22.0 GHz

INSUL. RES.: 5000 MEGOHMS, MIN.

### NOTES:

1. FOR A FOOTPRINT RECOMMENDATION SPECIFIC TO YOUR PCB, PLEASE CONTACT US AT [applications@svmicro.com](mailto:applications@svmicro.com)

SYM.	DESCRIPTION	DATE	APPR.	UNLESS OTHERWISE SPECIFIED: 1) ALL DIMENSIONS ARE AFTER PLATING. 2) BREAK CORNERS & EDGES .005 R. MAX. 3) CHAM. 1st & LAST THDS. 4) SURFACE ROUGHNESS 63 J MIL-STD-10. 5) DIAS. ON COMMON CENTERS TO BE CONCENTRIC WITHIN .005 T.I.R. 6) REMOVE ALL BURRS.	DIMENSIONS ARE IN INCHES TOLERANCES:			SV Microwave, Inc. 3301 Electronics Way West Palm Beach, FL 33407
				DECIMALS .X ±.030 .XX ±.015 .XXX ±.005	FRACTIONAL ±1/64	ANGULAR X° ±1°0' X°X' ±15'	TITLE:	
-	REL.DCN 29713	04/03	BRT					BMA JACK END LAUNCHER
				DRAWN: BRT 04/01/03	MATERIAL: SEE ABOVE	□" AREA:		
				CHECKED: BRT 04/01/03	FINISH: SEE ABOVE	N/A		
				APPROVED: BRT 04/01/03	SIZE B	CAGE NO. 95077	SCALE 5X	DWG. NO. 1785-0003