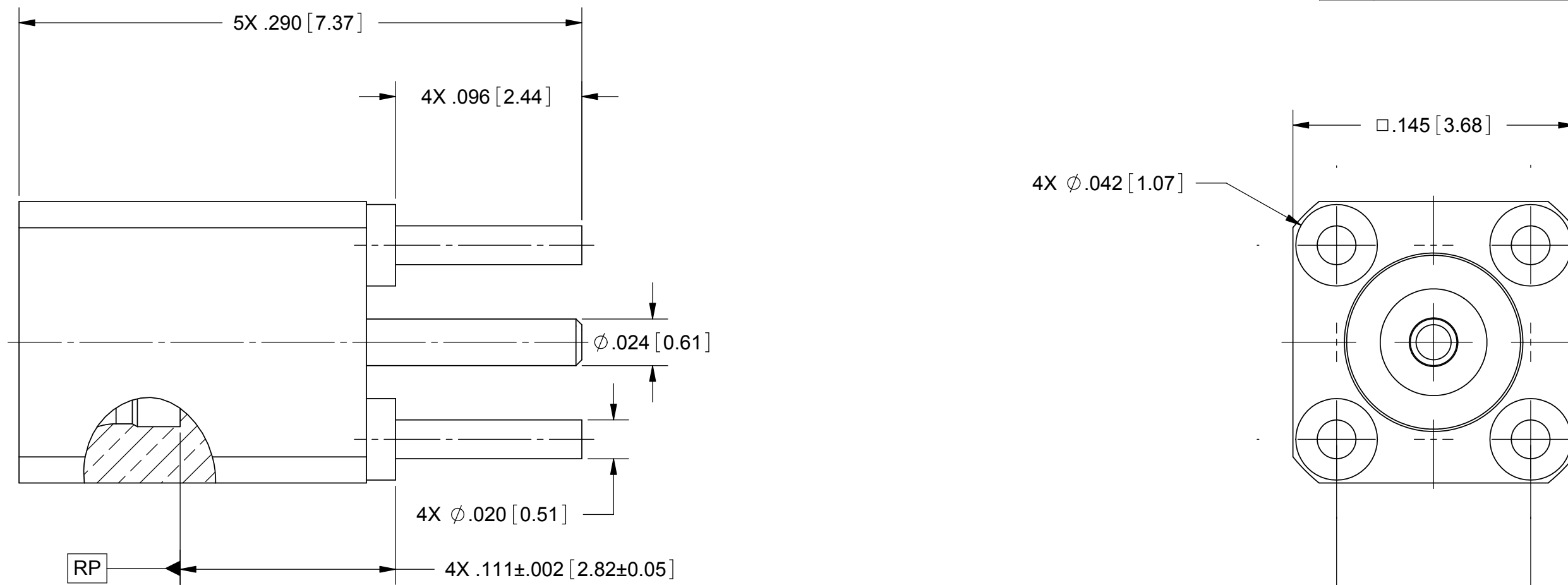


PRODUCT DATA DRAWING

| REVISION HISTORY | | | |
|------------------|-------------|-------|----------|
| REV | DESCRIPTION | DATE | APPROVED |
| - | DCN 35971 | 07/08 | STW |
| A | UPDATE | 11/12 | PJS |
| B | DCN 43140 | 02/17 | BNK |



NOTES:

- FOR A FOOTPRINT RECOMMENDATION SPECIFIC TO YOUR PCB, PLEASE CONTACT US AT applications@svmicro.com

MATERIAL:

BODY & CONTACT: BERYLLIUM COPPER

INSULATOR: PTFE

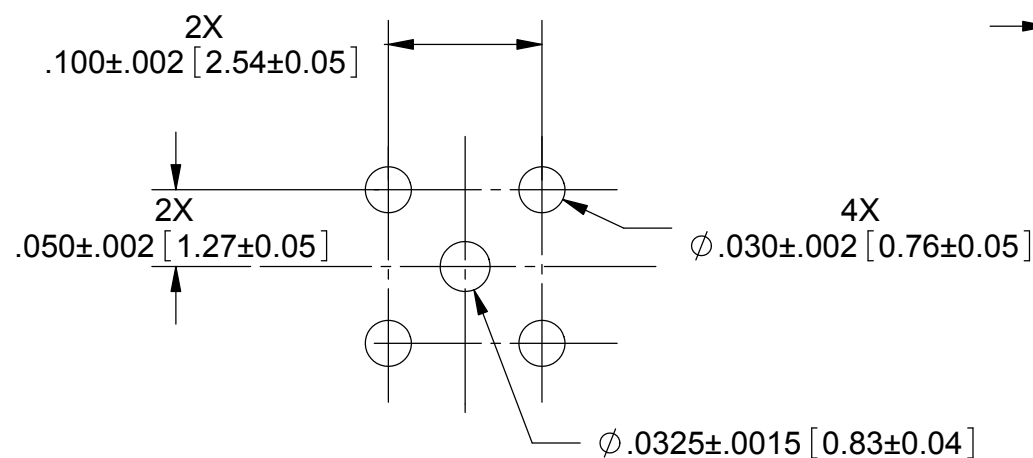
FINISH:

BODY: 4 μ -in MIN GOLD

CONTACT: 12 μ -in MIN GOLD

PERFORMANCE:

IMPEDANCE: 50 OHMS
 FREQ. RANGE: DC TO 28.0 GHz
 VSWR: 1.35:1 DC TO 28.0 GHz
 DWV: 325 VRMS
 OPERATING TEMP.: -55 °C TO +125 °C



RECOMMENDED MTG. HOLE PATTERN

| | | | |
|---------------------|--|---|---|
| MATERIAL: SEE NOTES | DIMENSIONS ARE IN INCHES TOLERANCES: FRACTIONAL: $\pm 1/64$ ANGULAR: X° $\pm 1'0''$ X°X' $\pm 15''$ | UNLESS OTHERWISE SPECIFIED 1) ALL DIMENSIONS ARE IN INCHES (MILLIMETERS) 2) ALL DIMENSIONS ARE AFTER PLATING. 3) BREAK CORNERS & EDGES .005 R. MAX. 4) CHAM. 1ST & LAST THREADS. 5) SURFACE ROUGHNESS 63-MIL-STD-10. 6) DIA.'S ON COMMON CENTERS TO BE CONCENTRIC WITHIN .005 T.I.R. 7) REMOVE ALL BURRS | SV Microwave, Inc. 2400 Centrepark West Drive, Suite 100 West Palm Beach, FL 33409 |
| FINISH: SEE NOTES | DECIMAL: X $\pm .030$.XX $\pm .010$.XXX $\pm .005$ | INTERPRET DIMENSIONS AND TOLERANCES PER ASME Y14.5M - 1994 | TITLE: SMPM ST. MALE FULL DETENT TO PCB MOUNT |
| SURFACE AREA: N/A | PROPRIETARY THE INFORMATION CONTAINED IN THIS DRAWING IS THE SOLE PROPERTY OF SV MICROWAVE, INC. ANY REPRODUCTION IN PART OR AS A WHOLE WITHOUT THE WRITTEN PERMISSION OF SV MICROWAVE, INC IS PROHIBITED. | THIRD ANGLE PROJECTION | SIZE: B CAGE CODE: 95077 DWG. NO.: 3287-4100 |
| | | DRAWN: PJS 07/24/08 CHECKED: STW 07/24/08 APPROVED: STW 07/24/08 | SCALE: 16:1 SHEET 1 OF 1 |