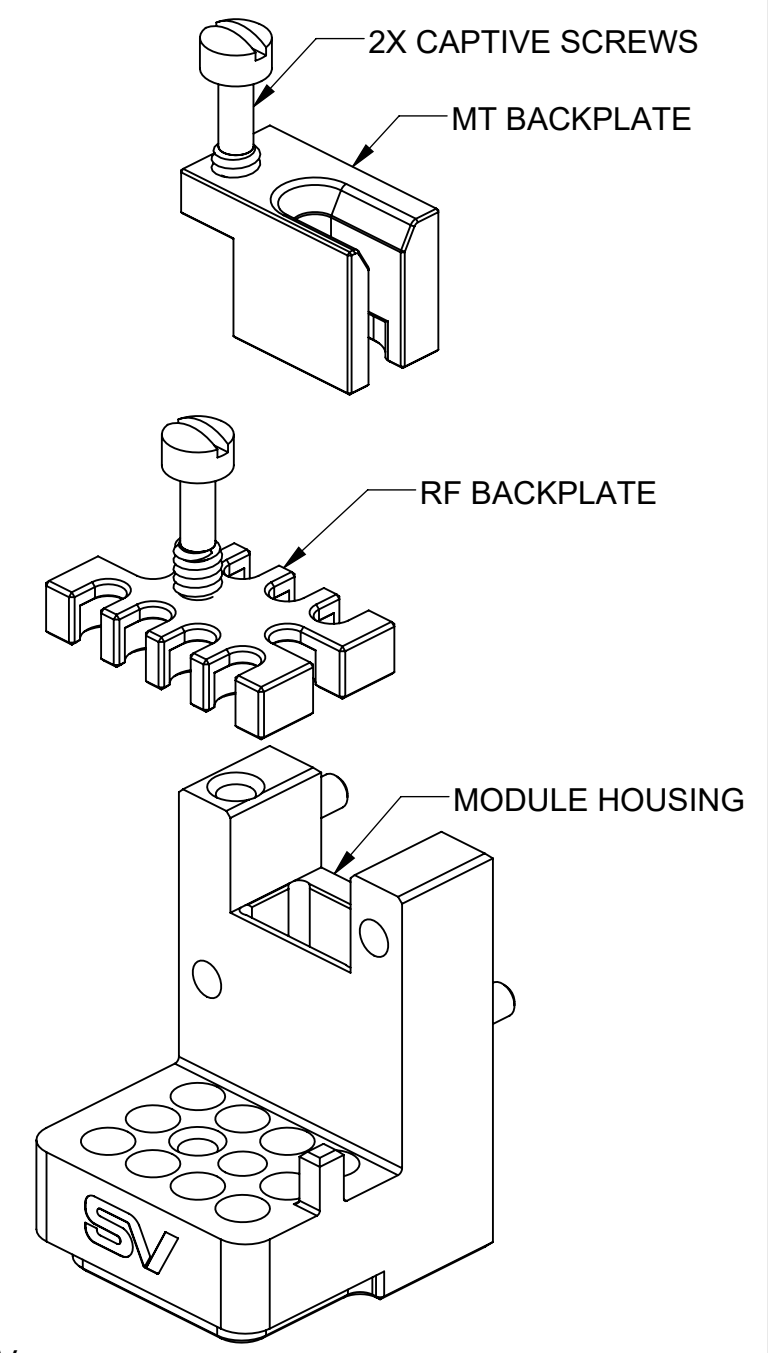
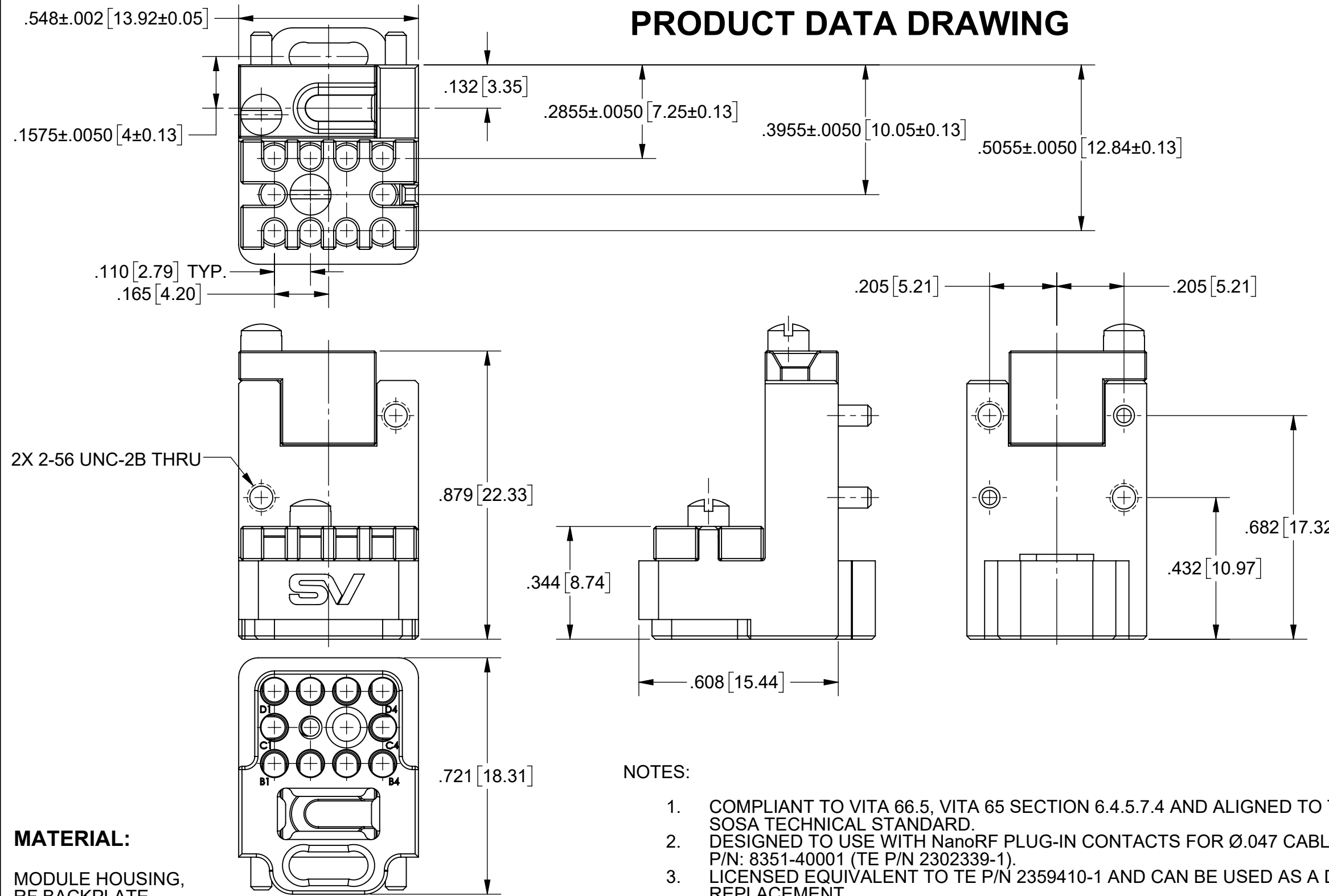


# PRODUCT DATA DRAWING

REVISION HISTORY			
REV	DESCRIPTION	DATE	APPROVED
B	DCN 54306	5/24	SEE PDM



**MATERIAL:**  
 MODULE HOUSING, RF BACKPLATE, & MT BACKPLATE: ALUMINUM PER ASTM B211 ALLOY 6061-T6 OR AMS-QQ-A-200/8 ALLOY 6061-T6

**CAPTIVE SCREWS:** STAINLESS STEEL

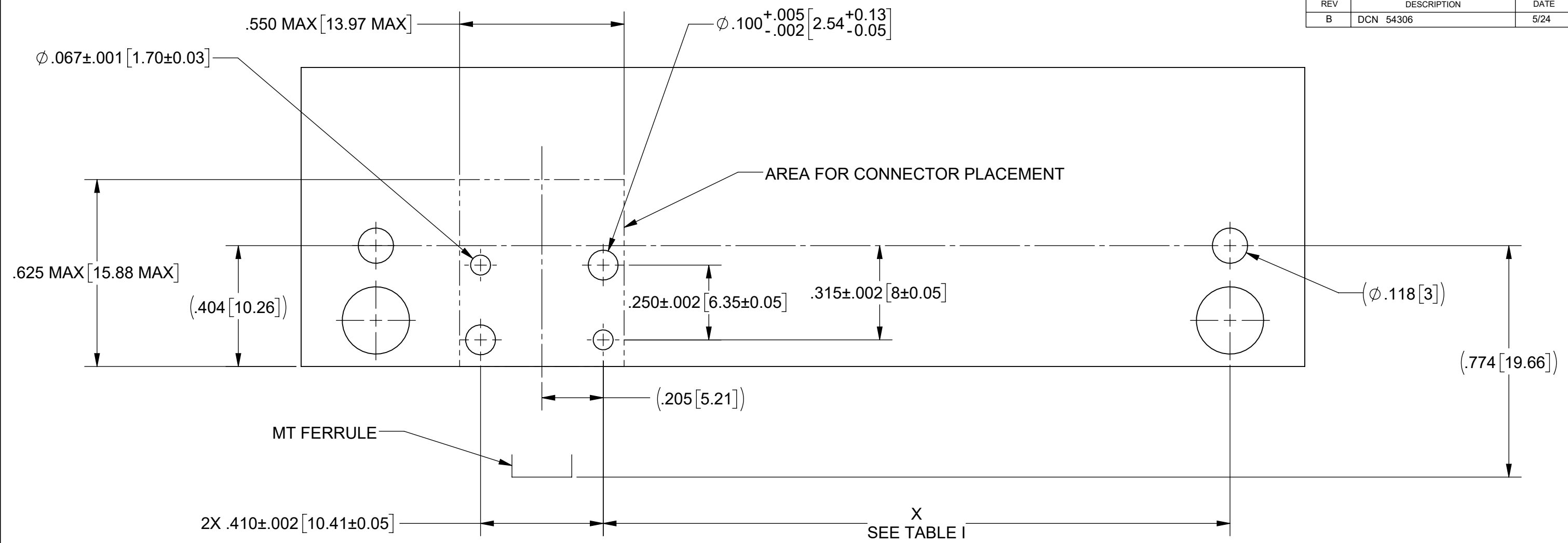
**FINISH:**  
 MODULE HOUSING, RF BACKPLATE, & MT BACKPLATE: CHEMICAL CONVERSION COATING PER MIL-DTL-5541, CLASS 3 COLOR CLEAR, TYPE II

**CAPTIVE SCREWS:** PASSIVATED


- NOTES:**
1. COMPLIANT TO VITA 66.5, VITA 65 SECTION 6.4.5.7.4 AND ALIGNED TO THE SOSA TECHNICAL STANDARD.
  2. DESIGNED TO USE WITH NanoRF PLUG-IN CONTACTS FOR Ø.047 CABLE, SV P/N: 8351-40001 (TE P/N 2302339-1).
  3. LICENSED EQUIVALENT TO TE P/N 2359410-1 AND CAN BE USED AS A DROP-IN REPLACEMENT.
  4. SHIPPED WITHOUT MT FERRULE KIT.
  5. MATES TO SV P/N 9341-80005 AND 9341-80006.
  6. PCB LAYOUT ON SHEET 2.

MATERIAL: SEE NOTES	DIMENSIONS ARE IN INCHES TOLERANCES: FRACTIONAL: ±1/64 ANGULAR: X° ±1'0" X'X' ±15'	UNLESS OTHERWISE SPECIFIED 1) ALL DIMENSIONS ARE IN INCHES (MILLIMETERS) 2) ALL DIMENSIONS ARE AFTER PLATING. 3) BREAK CORNERS & EDGES .005 R. MAX. 4) CHAM. 1ST & LAST THREADS. 5) SURFACE ROUGHNESS 63-MIL-STD-10. 6) DIA.'S ON COMMON CENTERS TO BE CONCENTRIC WITHIN .005 T.I.R. 7) REMOVE ALL BURRS	 TITLE: NANORF PLUG-IN MODULE, 2X 10 POS RF & FIBER OPTIC, FOR Ø.047 CABLE SIZE DWG. NO. B 9351-80004 SCALE: 3:1
FINISH: SEE NOTES	DECIMAL: X ±.030 .XX ±.010 .XXX ±.005	INTERPRET DIMENSIONS AND TOLERANCES PER ASME Y14.5M - 1994	
SURFACE AREA: N/A	THIRD ANGLE PROJECTION	DRAWN: JDT 4/1/24	SHEET 1 OF 2
PROPRIETARY THE INFORMATION CONTAINED IN THIS DRAWING IS THE SOLE PROPERTY OF SV MICROWAVE, INC. ANY REPRODUCTION IN PART OR AS A WHOLE WITHOUT THE WRITTEN PERMISSION OF SV MICROWAVE, INC IS PROHIBITED.		CHECKED: SEE PDM APPROVED: SEE PDM	

REVISION HISTORY			
REV	DESCRIPTION	DATE	APPROVED
B	DCN 54306	5/24	SEE PDM



POSITION	X DIMENSION
P2A	2.107 [53.52]
P2B	2.669 [67.79]
P3A	3.654 [92.81]
P3B	4.221 [107.21]
P4A	4.987 [126.67]
P4B	5.554 [141.07]
P5A	6.121 [155.47]
P5B	6.688 [169.88]
P6A	7.269 [184.63]
P6B	7.836 [199.03]

MATERIAL: SEE NOTES	DIMENSIONS ARE IN INCHES TOLERANCES: FRACTIONAL: $\pm 1/64$ ANGULAR: X° $\pm 1'0''$ X°X' $\pm 15''$	UNLESS OTHERWISE SPECIFIED 1) ALL DIMENSIONS ARE IN INCHES (MILLIMETERS) 2) ALL DIMENSIONS ARE AFTER PLATING. 3) BREAK CORNERS & EDGES .005 R. MAX. 4) CHAM. 1ST & LAST THREADS. 5) SURFACE ROUGHNESS 63-MIL-STD-10. 6) DIA. 'S ON COMMON CENTERS TO BE CONCENTRIC WITHIN .005 T.I.R. 7) REMOVE ALL BURRS	 www.svmicrowave.com	
FINISH: SEE NOTES	DECIMAL: X $\pm .030$ .XX $\pm .010$ .XXX $\pm .005$			
SURFACE AREA: N/A	INTERPRET DIMENSIONS AND TOLERANCES PER ASME Y14.5M - 1994	DRAWN: JDT 4/1/24	TITLE: <b>NANORF PLUG-IN MODULE, 2X          10 POS RF &amp; FIBER OPTIC,          FOR <math>\phi .047</math> CABLE</b>	
<b>PROPRIETARY</b> THE INFORMATION CONTAINED IN THIS DRAWING IS THE SOLE PROPERTY OF SV MICROWAVE, INC. ANY REPRODUCTION IN PART OR AS A WHOLE WITHOUT THE WRITTEN PERMISSION OF SV MICROWAVE, INC IS PROHIBITED.	THIRD ANGLE PROJECTION			CHECKED: SEE PDM
		APPROVED: SEE PDM	SCALE: 3:1	SHEET 2 OF 2