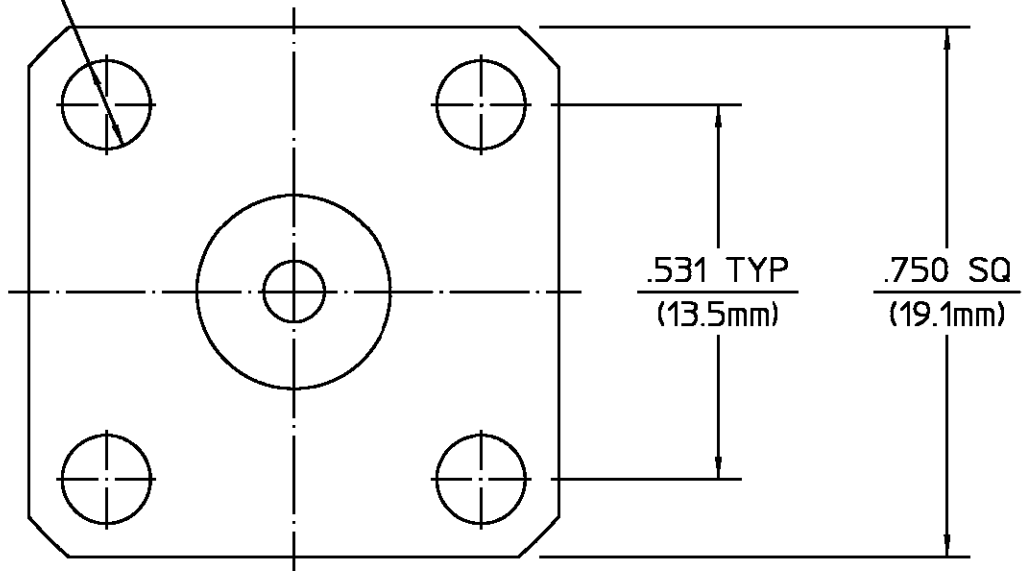


OST JACK

.4375-28,UNEF-2A

REF PLANE

.125 DIA (3.2mm) 4 PLACES



REVISIONS			
REV	DESCRIPTION	DATE	APPROVED
01 <sub>0</sub>	RELEASED		
01 <sub>1</sub>	REDRAWN IN CAD PER ECN 88-0678	10/21/91	BB

HOUSING	BRASS PER QQ-B-626 COMP. 360 HALF HARD	NICKEL PLATE PER QQ-N-290 OVER COPPER STRIKE
DIELECTRIC	TFE FLUOROCARBON PER ASTM-D-1457	N/A
CENTER CONTACT	BERYLLIUM COPPER PER ASTM B 196, ALLOY C17330 CONDITION H	GOLD PLATE PER MIL-G-45204 OVER COPPER PLATE PER MIL-C-14550

COMPONENT	MATERIAL	FINISH
-----------	----------	--------

UNLESS OTHERWISE SPECIFIED DIMENSIONS ARE IN INCHES TOLERANCE ON FRAC. DEC. ANGLES ± 1/64 ± .005 ± 1°	DRAWN BY JPD	DATE 6-18-75	AMP Incorporated 140 Fourth Avenue Waltham, MA 02451-7599
	CHECKED BY RMF	DATE 6-18-75	
	APPRD BY PRB	DATE 6-18-75	

These drawings and specifications are the property of Omni Spectra Incorporated and shall not be reproduced or copied or used in whole or in part as the basis for the manufacture or sale of item(s) without written permission.	USE ASSY PROCEDURE	TITLE OST 4 HOLE FLANGE MOUNT JACK RECEPTACLE STRAIGHT TERMINAL	
	NO. AP. N/A	SIZE B	REV 01 <sub>1</sub>
		CODE IDENT NO. 26805	3152-1201-10
	SCALE 4:1	SHEET 1 OF 1	

NOTES:  
1. CAPTURED CENTER CONTACT

CUSTOMER DRAWING

AMP PART # 1057780-1  
SHEET 1 OF 1 REV A