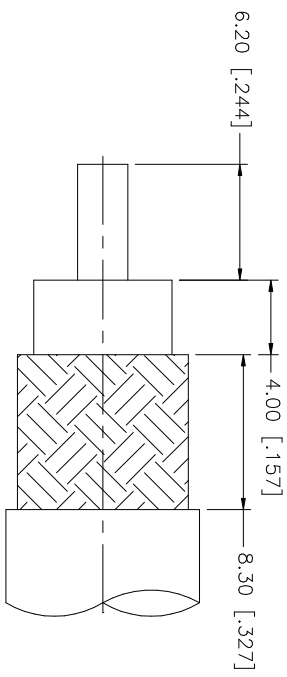
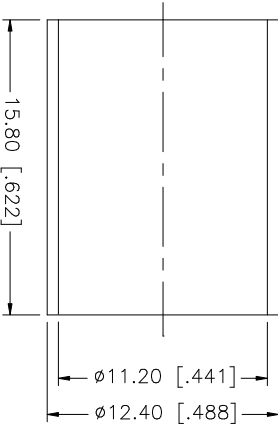
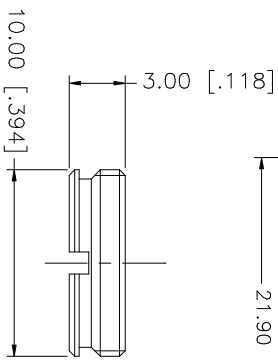
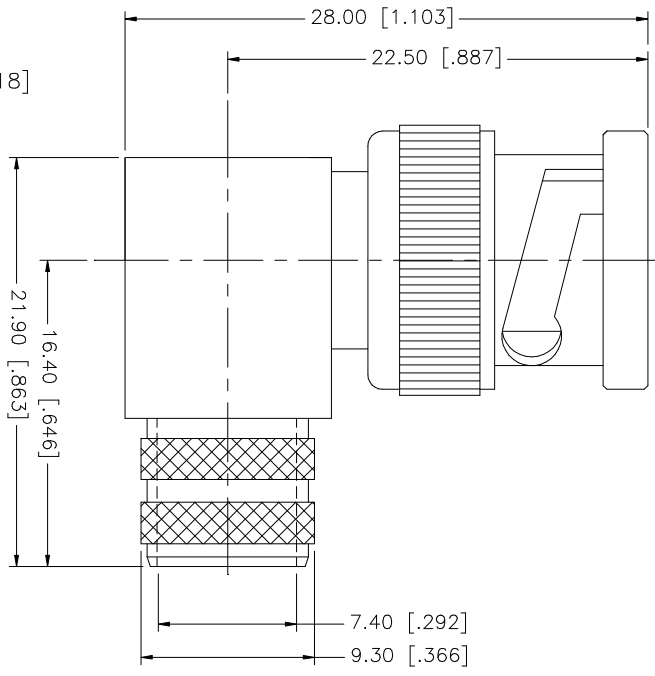


REV.	DATE	DESCRIPTION
A	06/23/98	MODIFY INTERNAL FERRULE DIMENSION
B	09/06/06	UPDATE DRAWING FORMAT



RECOMMENDED
CABLE STRIPPING DIM'S

DESCRIPTION	MATERIAL	FINISH	QTY	UNLESS OTHERWISE SPECIFIED DIMENSIONS ARE IN MILLIMETERS. DIMENSIONS IN [] ARE IN INCHES AND FOR CUSTOMER REFERENCE ONLY. TOLERANCES FOR MILLIMETERS ARE: 0.5 - 8mm ± 0.20mm 8 - 30mm ± 0.40mm 30 - 120mm ± 0.50mm UNLESS OTHERWISE SPECIFIED DIMENSIONS FOR INCHES ARE: .020 - .315 = ± 0.007" .315 - 1.180 = ± 0.015" 1.180 - 4.724 = ± 0.020"	APPROVALS	DATE	PART DESCRIPTION	DWG. NO.	REV.	SIZE	SCALE
8				UNLESS OTHERWISE SPECIFIED DIMENSIONS ARE IN MILLIMETERS. DIMENSIONS IN [] ARE IN INCHES AND FOR CUSTOMER REFERENCE ONLY. TOLERANCES FOR MILLIMETERS ARE: 0.5 - 8mm ± 0.20mm 8 - 30mm ± 0.40mm 30 - 120mm ± 0.50mm UNLESS OTHERWISE SPECIFIED DIMENSIONS FOR INCHES ARE: .020 - .315 = ± 0.007" .315 - 1.180 = ± 0.015" 1.180 - 4.724 = ± 0.020"			Amphenol Comnex BNC R/A CRIMP PLUG (FOR RG 214/U CABLE)	112595.DWG	B	A	N/A
7				DRAWN	G.R.S.	09/06/06					
6	COVER	BRASS	NICKEL	CHECKED							
5	FERRULE	BRASS	NICKEL	ISSUED							
4	CONTACT PIN	BRASS	GOLD	SHEET	1 OF 1						
3	INSULATOR	TEFLON	NATURAL								
2	BODY	BRASS	NICKEL								
1	DESCRIPTION										

DO NOT SCALE DRAWING	CAD FILE
	C:/112/112595.DWG