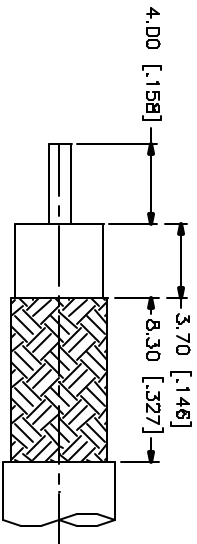
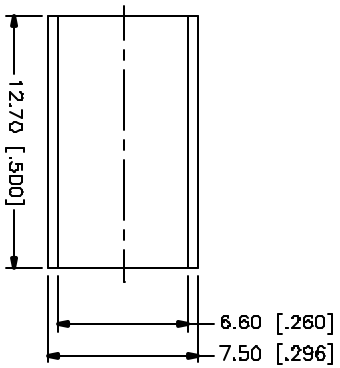
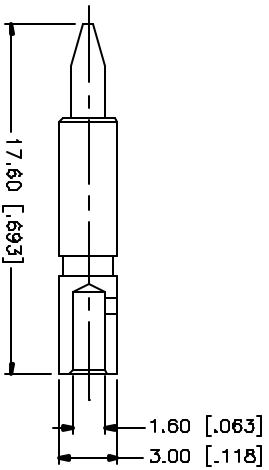
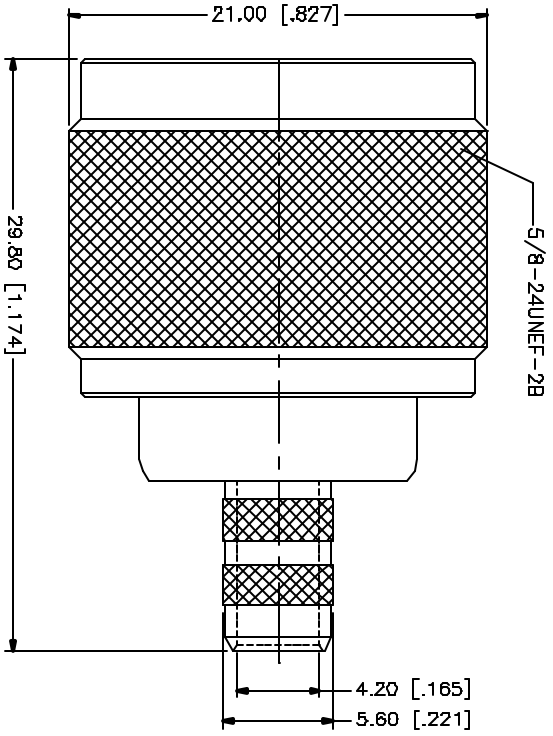


REV.	DATE	DESCRIPTION
A	04/31/03	UPDATE DRAWING FORMAT



RECOMMENDED
CABLE STRIPPING DIM'S

- NOTE:
1. CRIMPED FERRULE
HEX CRIMP SIZE .255"
 2. CRIMPED CONTACT PIN
HEX CRIMP SIZE .100"

QTY	FINISH	MATERIAL	DESCRIPTION
1	NEXCOTE	COPPER	FERRULE
1	COLD	BRASS	CONTACT PIN
1	NATURAL	TEFLON	INSULATOR
1	NEXCOTE	BRASS	BODY

APPROVALS	DATE	PART DESCRIPTION
G.R.S.	04/31/03	N CRIMP PLUG (FOR LMR-240, RG-8/X)
CHECKED		
ISDALED		
SHEET	1 OF 1	

Amphenol Connex

N CRIMP PLUG
(FOR LMR-240, RG-8/X)

172135

DWG. NO. 172135.DWG REV. A SIZE A SCALE NA

DDO FILE C:/172/172135.DWG

UNLESS OTHERWISE SPECIFIED, DIMENSIONS ARE IN MILLIMETERS, DIMENSIONS IN [] ARE IN INCHES AND ARE FOR DISTRICTS REQUIRING THIS.

UNLESS OTHERWISE SPECIFIED, DIMENSIONS ARE IN MILLIMETERS AND TOLERANCES FOR MILLIMETERS ARE:

D.5 - 8mm ± 0.20mm
B - 30mm ± 0.40mm
30 - 120mm ± 0.50mm

UNLESS OTHERWISE SPECIFIED, DIMENSIONS ARE IN MILLIMETERS AND TOLERANCES FOR MILLIMETERS ARE:

.020 - .315 ± 0.007"
.315 - 1.180 ± 0.015"
1.180 - 4.724 ± 0.020"

DO NOT SCALE DRAWINGS