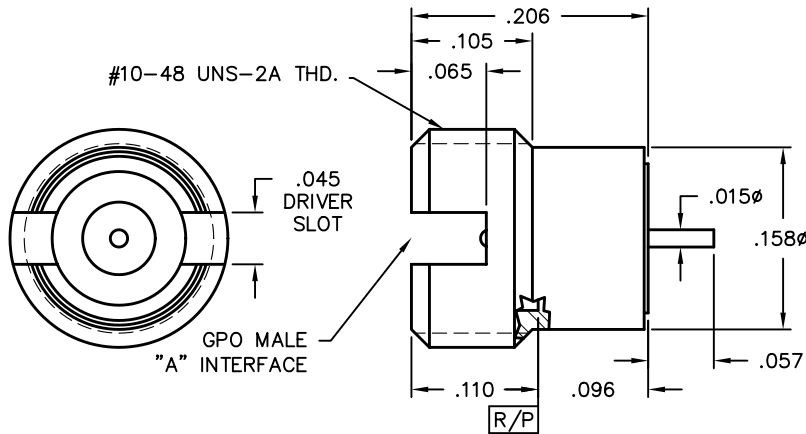


**GPO Thread-In Shrouds**

**Male Thread-in Non-hermetic Straight Terminal**



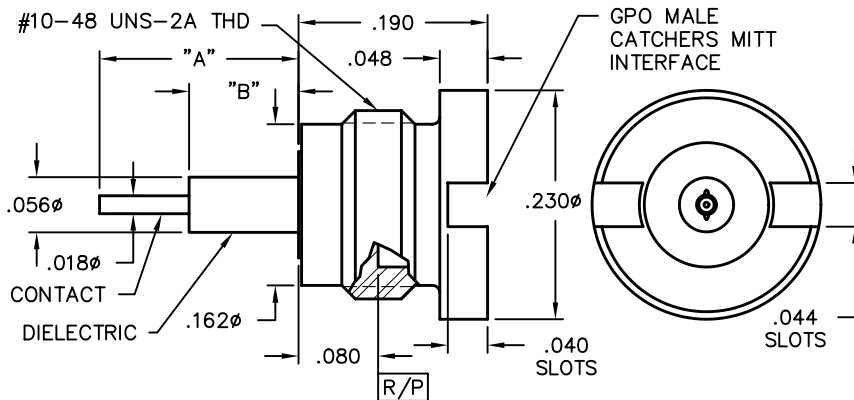
Catalog Number	A	Tools Recommended
0119-258-3-FD	FD	A090-A99-01 for FD
0119-258-3-LD	LD	A090-A99-02 for LD
0119-258-3-SB	SB	A090-A99-03 for SB

**VSWR (TYP)**

1.25:1 to 18 GHz  
1.35:1 to 26.5 GHz



**Male Catchers Mitt to Straight Terminal**



Catalog Number	A	B
0119-424-3-1	.067-.073	.040
0119-424-3-2	.097-.103	.040
0119-424-3-3	.200	.110
0119-424-3-4	.350	.260

**VSWR (TYP)**

1.35:1 to 18 GHz  
1.45:1 to 26.5 GHz

**Tools Recommended**

A090-A99-03

**Assembly Procedure**

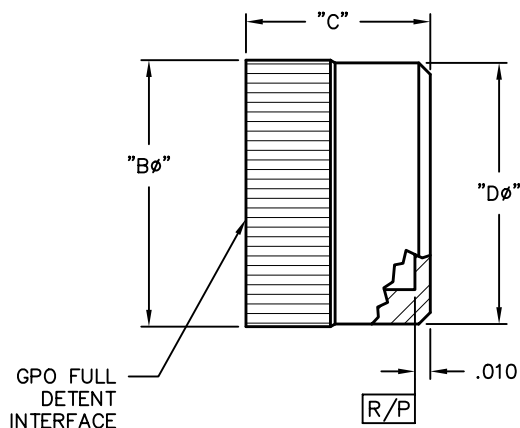
AP01-057



1. CONTACT ROTATIONALLY CAPTIVATED IN RELATION TO OUTER HOUSING.

**GPO Press-In Shrouds**

**Male Press-in Shroud**



Catalog Number	A	B $\phi$	C	D $\phi$
A005-A23-01	FD	.174	.120	.170
A005-A24-01	LD	.174	.120	.170
A005-A25-01	SB	.174	.120	.170
A005-A23-02	FD	.154	.080	.143
A005-A24-02	LD	.154	.080	.143
A005-A25-02	SB	.154	.080	.143

**Tools Recommended**

A090-A99-08

