

CATALOG NUMBER

A018-D11-01

MATERIAL AND FINISH

FLOAT MOUNT,
SPRING RING,
AND BUSHING:

CRES 303; PASSIVATED

CENTER CONTACT,
CABLE ADAPTER,
GPO HOUSING,
AND SNAP RING:

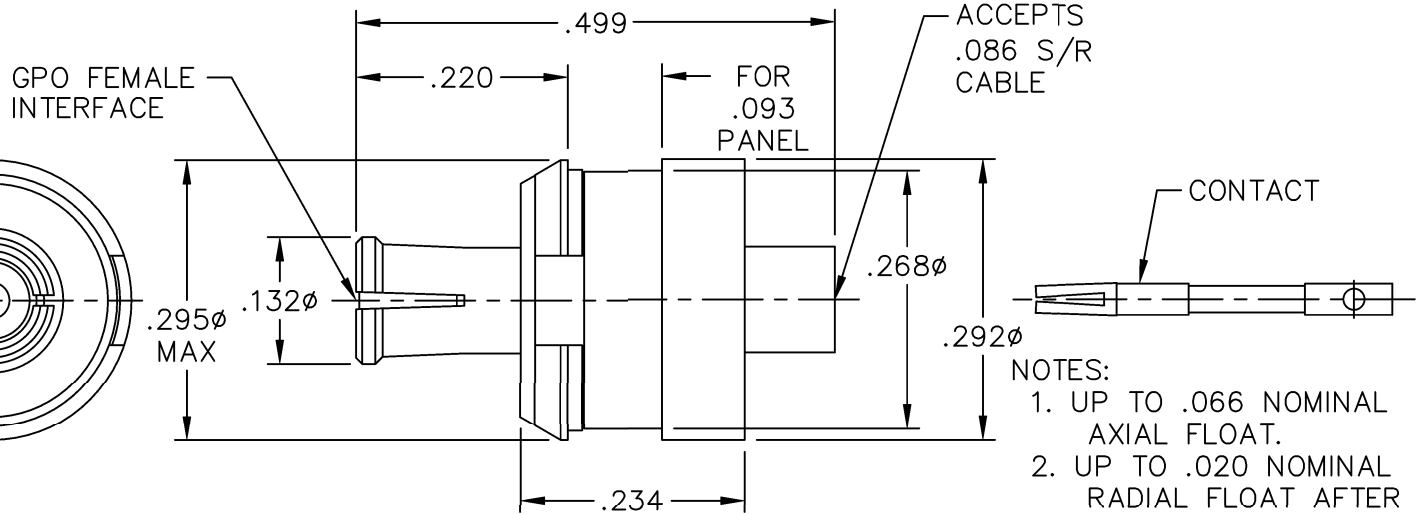
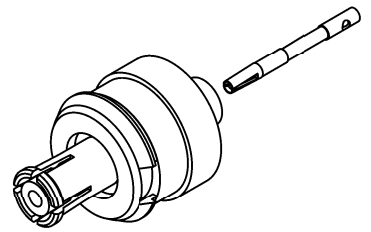
BeCu; GOLD PLATE 75 MICROINCHES TYPICAL
OVER NICKEL PLATE 100 MICROINCHES TYPICAL

SPRING:

STAINLESS STEEL 17-7; PASSIVATED

DIELECTRICS:

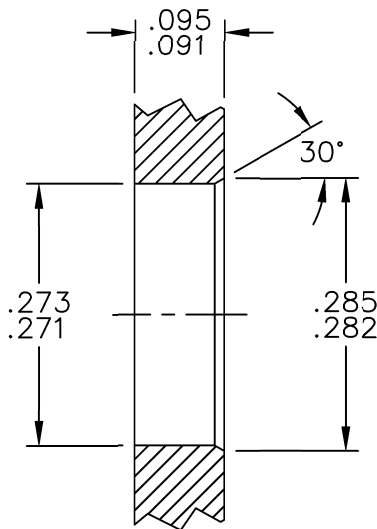
VIRGIN PTFE



- NOTES:
1. UP TO .066 NOMINAL AXIAL FLOAT.
 2. UP TO .020 NOMINAL RADIAL FLOAT AFTER .020 AXIAL PRELOAD.

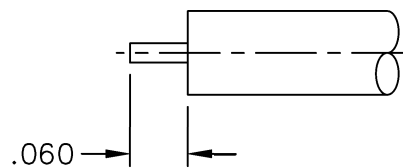
CAUTION: THIS TECHNOLOGY UNDER U.S. EXPORT CONTROL

EXTRACTION TOOL
- A098-A99-05.



RECOMMENDED
MOUNTING HOLE

CABLE PREPARATION



This drawing and any data contained herein is the property of Corning Gilbert Inc., and constitutes and contains proprietary and confidential information. Neither receipt nor possession of this drawing confers or transfers any right to duplicate, use or disclose any information contained herein except as expressly authorized by Corning Gilbert Inc.

GPO FEMALE SNAP-IN
FLOAT MOUNT TO
.086 S/R CABLE

IDENT CODE:
82316

REVISION: C1

Corning Gilbert Inc.

SOURCE FILE: MECR# 1580

DWG. NO.: OL-A018-D11-01

ASSY. PROC.: IS-7504-1