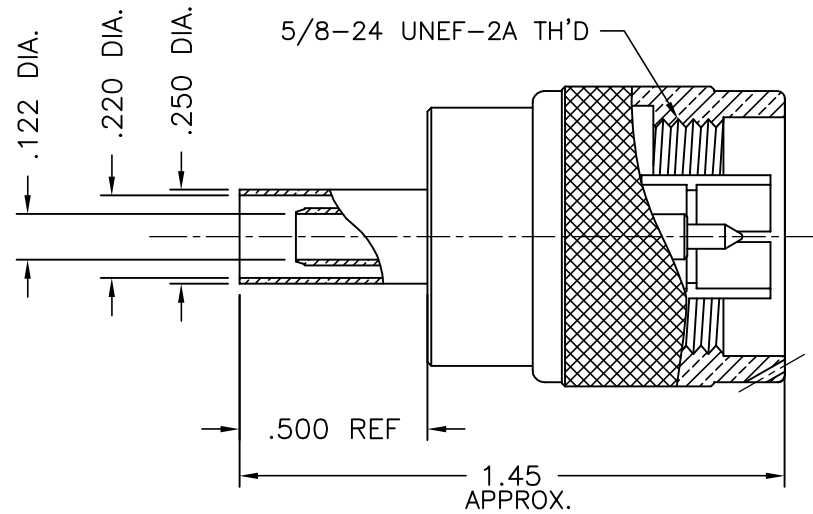
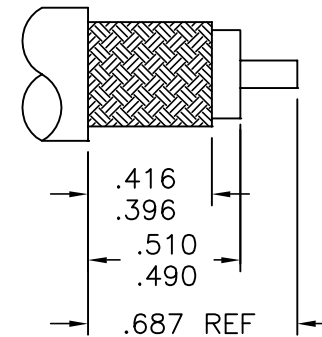
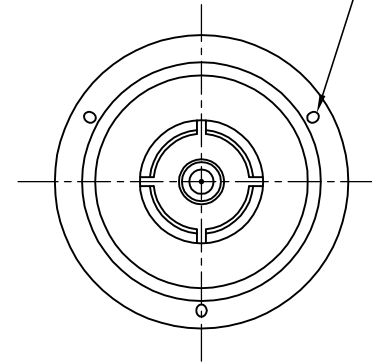




1103-018-A00E



(3) .027 DIA. MIN. WIREHOLES



CABLE CUTTING DIMENSIONS

NOTES:

1. ASSEMBLED CONNECTOR INTERFACE IS DESIGNED IN ACCORDANCE WITH MIL-STD-348.
2. MATERIAL: ALL METAL PARTS ARE - BRASS PER ASTM B16, EXCEPT
 SNAP RING - PHOSPHOR BRONZE PER QQ-P-330
 CRIMP SLEEVE - D.H.P. COPPER CDA ALLOY 122
 GASKET - SILICONE RUBBER PER ZZ-R-765
 INSULATOR - TEFLON PER ASTM D1710
3. FINISHES: ALL METAL PARTS ARE - SILVER PLATE PER QQ-S-365
 CONTACT - GOLD PLATE PER MIL-G-45204
4. RECOMMENDED CRIMP TOOL: M22520/5-01 WITH CRIMP DIE M22520/5-19
 CLOSURE B (.213 HEX).

M39012/01-0503

UNLESS OTHERWISE SPECIFIED: TOLERANCES: 3 PLACES = ±.005, 2 PLACES = ±.02, ANGLES = ±1/2°, SURFACE FINISH = 63

A	REVISED	1/7/03
-	OUTLINE	10/2/96
ALT.	REVISIONS	DATE

DELTA ELECTRONICS MFG. CORP. Beverly, MA 01915				
TITLE: 'N' CRIMP TYPE PLUG W/CAPTIVE CONTACT FOR RG-142, 223, 400/U CABLE				
Drawn by RWP	Scale 2/1	Ckd. by	Engr Appd	FILE NAME: 1103018A00E-000T
10/2/96				

THESE DRAWINGS AND SPECIFICATIONS ARE THE PROPERTY OF DELTA ELECTRONICS MFG CORP. AND SHALL NOT BE REPRODUCED, OR COPIED OR USED AS THE BASIS FOR THE MANUFACTURE OR SALE OF APPARATUS OR DEVICES WITHOUT THEIR EXPRESS WRITTEN CONSENT.

CODE IDENT.-00795

1103-018-A00E