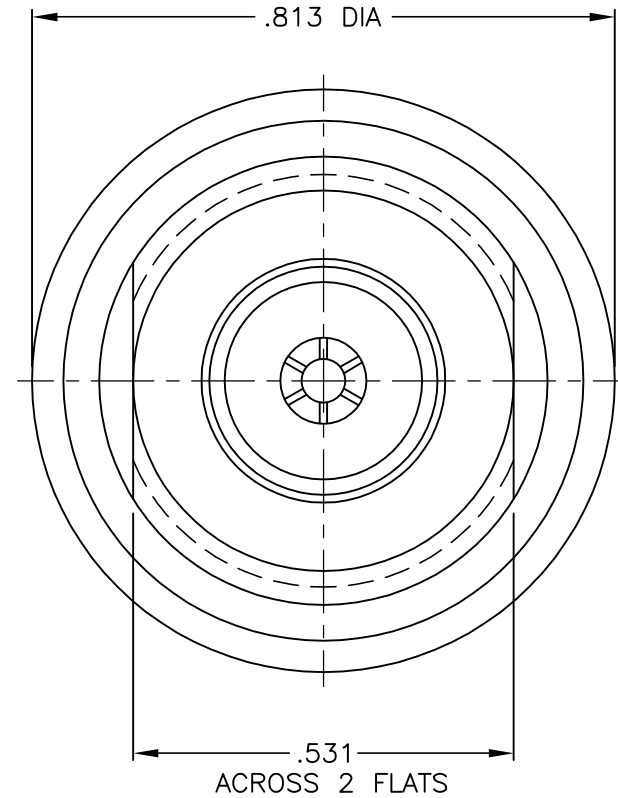
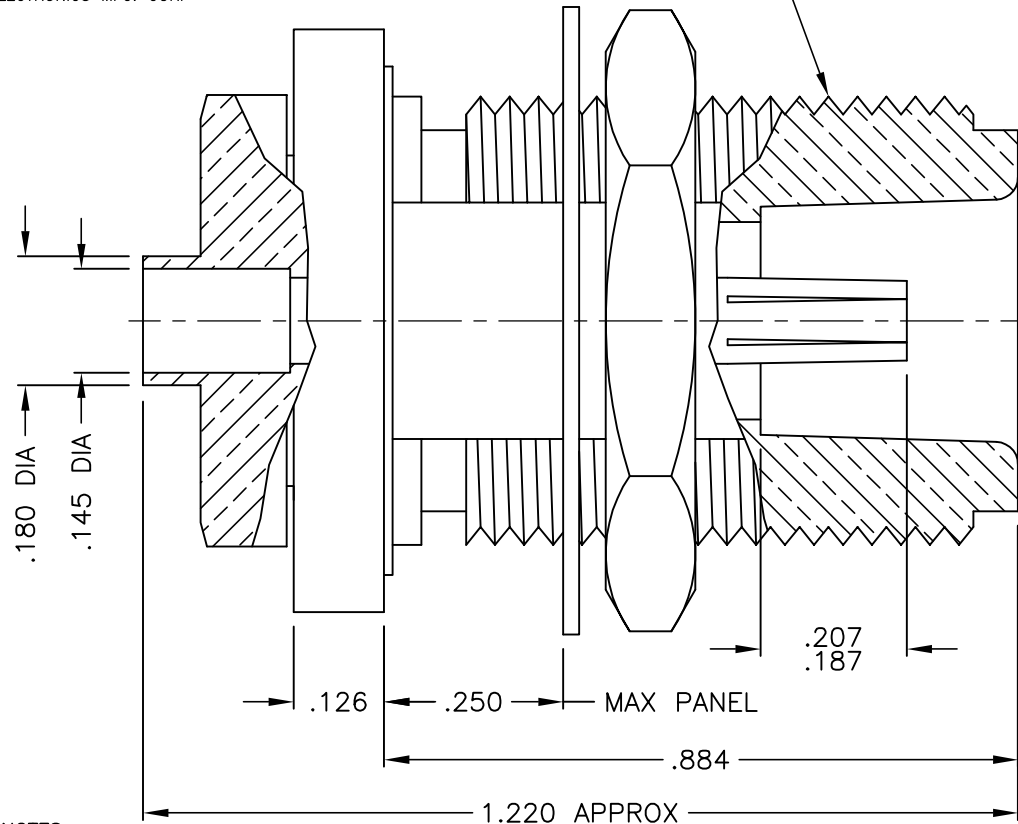




1116-031-N723-1

5/8-24 UNEF-2A THREAD



VIEW SHOWN WITH HEX. NUT
& LOCKWASHER REMOVED

NOTES:

- ASSEMBLED CONNECTOR INTERFACE IS DESIGNED IN ACCORDANCE WITH MIL-STD-348.
- MATERIAL: BODY, SOLDER NUT, HEX NUT- BRASS PER ASTM B16
CONTACT - BERYLIUM COPPER PER ASTM B196
INSULATOR - TEFLON PER ASTM D1710
LOCKWASHER - SPRING STEEL
GASKET - SILICONE RUBBER PER ZZ-R-765
- FINISHES: BODY, HEX NUT & LOCKWASHER - NICKEL PLATE PER QQ-N-290
CONTACT - GOLD PLATE PER MIL-G-45204
SOLDER NUT - GOLD PLATE PER MIL-G-45204

UNLESS OTHERWISE SPECIFIED: TOLERANCES: 3 PLACES = ±.005, 2 PLACES = ±.02, ANGLES = ±1/2'

A	REVISED	4/21/03
-	OUTLINE	2/26/97
ALT.	REVISIONS	DATE

DELTA ELECTRONICS MFG. CORP. Beverly, MA 01915				
TITLE: 'N' (F) BULKHEAD DIRECT SOLDER JACK FOR .141 DIA. SEMI-RIGID CABLE				
Drawn by RWP	Scale 4/1	Ckd. by	Engr Appd	FILE NAME: 1116031N723-001T
2/26/97				
CODE IDENT.-00795		1116-031-N723-1		

THESE DRAWINGS AND SPECIFICATIONS ARE THE PROPERTY OF DELTA ELECTRONICS MFG CORP. AND SHALL NOT BE REPRODUCED, OR COPIED OR USED AS THE BASIS FOR THE MANUFACTURE OR SALE OF APPARATUS OR DEVICES WITHOUT THEIR EXPRESS WRITTEN CONSENT.