

DC BLOCKS

2.9mm

7 kHz - 26.5 GHz

INNER ONLY



MODELS: 8060A, 8063A & 8066A

SPECIFICATIONS:

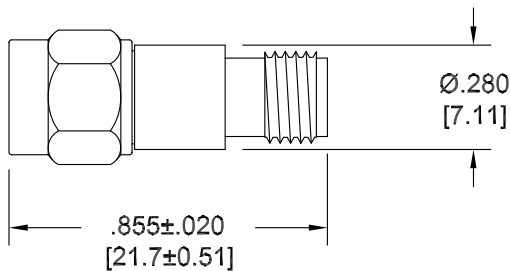
Electrical:

Frequency Range and Typ. -3 dB Bandwidth ____ 7 kHz - 26.5 GHz
 VSWR:
 250 kHz - 18 GHz _____ 1.35:1 Max.
 18 GHz - 26.5 GHz _____ 1.50:1 Max.
 Typ. Risetime _____ <9 picoSeconds
 Capacitance Nominal _____ 100 nanoFarads
 Impedance _____ 50 Ohms
 Insertion Loss:
 250 kHz - 18 GHz _____ 0.5 dB Max.
 18 GHz - 26.5 GHz _____ 0.75 dB Max.
 Voltage Rating _____ 75 Volts Max.
 Operating Temp. Range _____ -35°C to +85°C

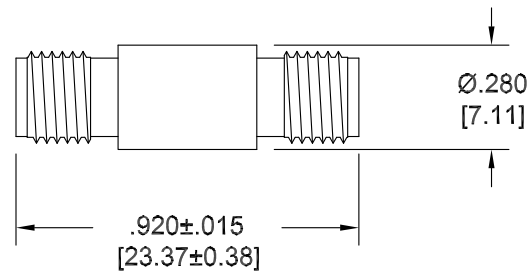
Mechanical:

2.9mm Connectors _____ Passivated Stainless Steel
 (Mate both Mechanically & Electrically with all SMA, SMK, K*, 2.92 mm & 3.5mm Series Connectors.)
 Conductors _____ Gold Plated Beryllium Copper
 Housings _____ Passivated Stainless Steel

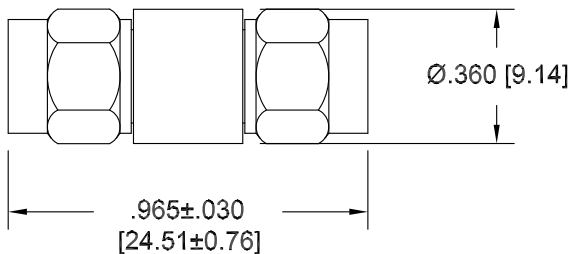
Model Number: **8060A**
 2.9mm Male / Female



Model Number: **8063A**
 2.9mm Female / Female



Model Number: **8066A**
 2.9mm Male / Male



Note: Dimensions in Brackets are Expressed in Millimeters and are for Reference Only.
 Design specifications are subject to change without notice.
 Contact factory for technical specifications before purchasing or use.