

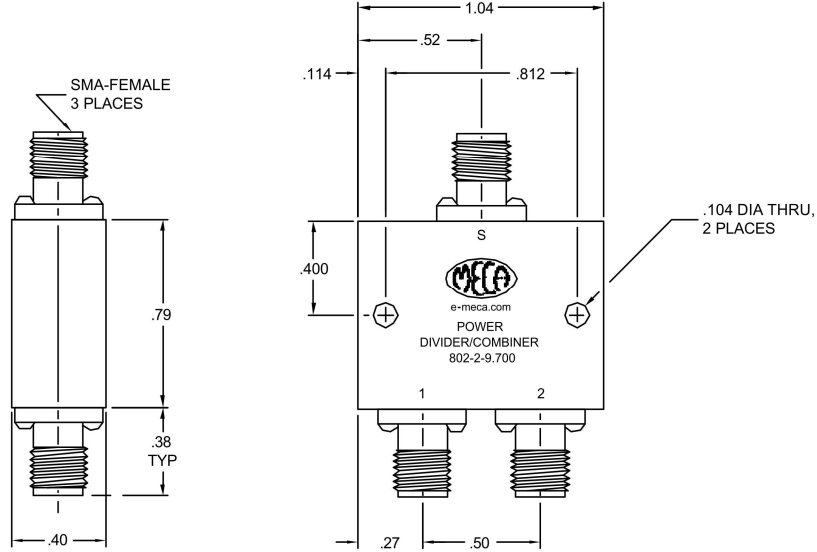
ELECTRICAL SPECIFICATIONS


MECHANICAL SPECIFICATIONS

FREQUENCY RANGE (GHz): 7.000-12.400
 IMPEDANCE (NOMINAL): 50 OHMS
 * VSWR: INPUT: 1.30:1 TYP/1.40:1 MAX
 OUTPUT: 1.25:1 TYP/1.35:1 MAX
 INSERTION LOSS (dB): 0.4 TYP/0.5 MAX
 AMPLITUDE BALANCE (MAX): 0.2 dB
 ISOLATION (dB): 21 TYP/19 MIN
 PHASE BALANCE (MAX): 4 DEGREES
 RF POWER (TOTAL MAX): 20 WATTS INPUT WITH LOAD
 * (AS DIVIDER ONLY) VSWR 1.2:1 OR BETTER

CONNECTORS: SMA-FEMALE, STAINLESS STEEL, PASSIVATE
 CONNECTOR PINS: BERYLLIUM COPPER, GOLD PLATE
 HOUSING: ALUMINUM, RoHS IRIDITE
 INSULATORS: PTFE, VIRGIN ELECTRICAL GRADE
 TEMPERATURE: -55°C TO +85°C

* NOTE: SEE APPLICATION NOTE MAP-801 (E-MECA.COM)



C		SEE DCN # 070924-1	09/24/07	NL	RR	MATERIAL: SEE ABOVE	UNLESS OTHERWISE SPECIFIED, DIMENSIONS ARE IN INCHES		 ELECTRONICS, INC. DENVER, NEW JERSEY e-meca.com		
						FINISH: SEE ABOVE	TOLERANCES 2 PLACES: ±.02 3 PLACES: ±.010 ANGLES: N/A			TITLE 2-WAY, IN-PHASE (0 DEGREE), POWER DIVIDER/COMBINER, SMA CONNECTORS	
						DRAWN: NL	DATE: 10/05/05	TIR: N/A			
LTR	PG	DESCRIPTION	DATE	DR	APP	APPROVED: JS	DATE: 10/05/05	SCALE: NTS	SIZE A	CODE IDENT. NO. 22424	DRAWING NO. 802-2-9.700
								SHEET: 1 OF 1			