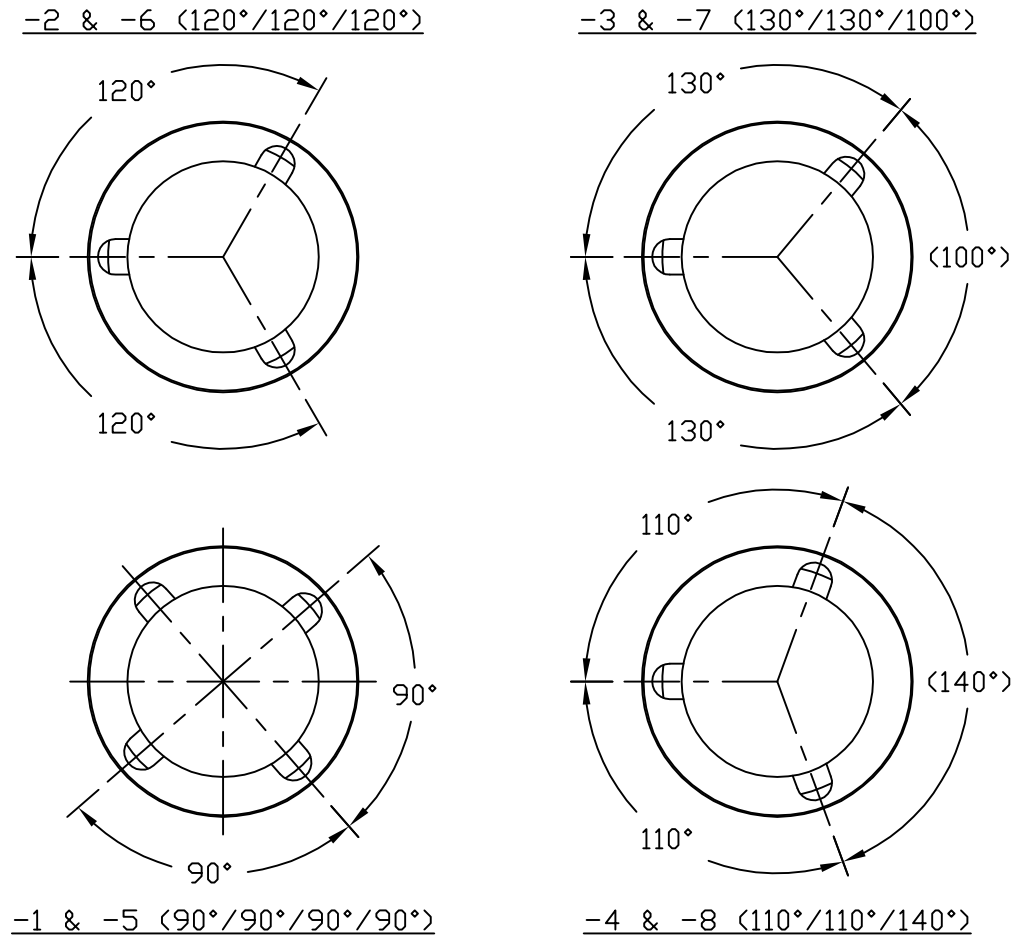
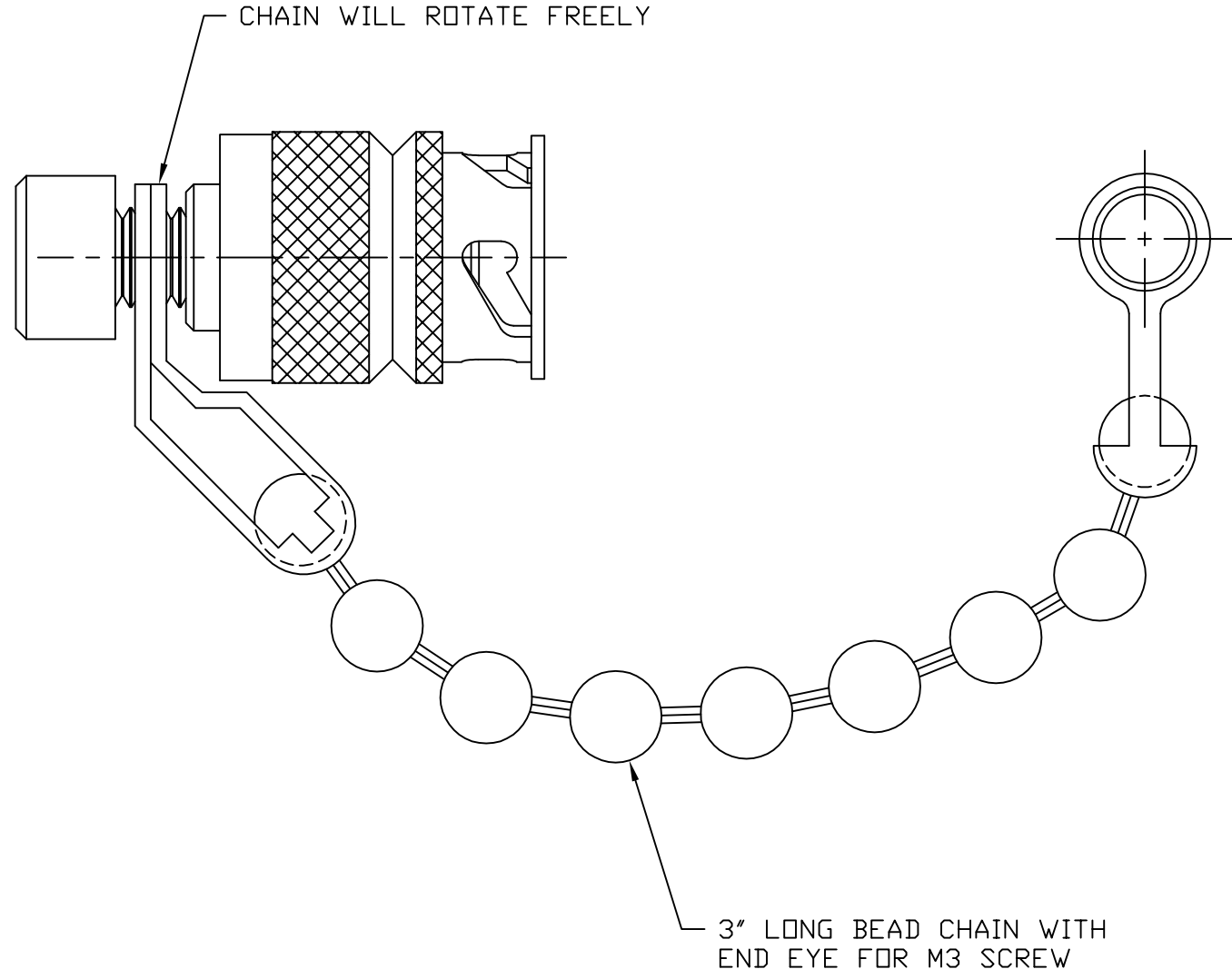


NOTICE OF PROPRIETARY RIGHTS
 THIS DOCUMENT CONTAINS CONFIDENTIAL TECHNICAL DATA, INCLUDING TRADE SECRETS, PROPRIETARY TO TIMES MICROWAVE SYSTEMS. DISCLOSURE OF THIS DATA IS EXPRESSLY CONDITIONED UPON YOUR ASSENT THAT ITS USE IS LIMITED TO USE WITHIN YOUR COMPANY ONLY. ANY OTHER USE IS STRICTLY PROHIBITED WITHOUT THE PRIOR WRITTEN CONSENT OF TIMES MICROWAVE SYSTEMS.

SD6250-254-SEE TAB	SYM	REVISION DESCRIPTION	DFTM	DATE	APPD	DATE
	A	RELEASED FOR PRODUCTION	D. J. H.	9/23/05	J. D. B.	9/29/05
	B	CHANGED PER CDC #25476	D. R. W.	2/14/06	J. D. B.	2/17/06
	C	CHANGED PER CDC #25522	D. R. W.	2/28/06	J. D. B.	2/28/06
	D	CHANGED PER CDC #50854	D. J. H.	2/6/19	D. A. R.	2/6/19



PART NAME	MATERIAL & SPEC. NUMBER	FINISH & SPEC. NUMBER
BODY	STAINLESS STEEL, ASTM A582	PASSIVATE, AMS-2700
COUPLING NUT	STAINLESS STEEL, ASTM A582	PASSIVATE, AMS-2700
CHAIN	STAINLESS STEEL, ASTM A582	PASSIVATE, AMS-2700

012455
 W.D. NUMBER
 MATERIAL:
 SEE TABLE

DRAFTSMAN	Dan Hlong	9/23/05
CHECKER	John D. Bloomfield	9/29/05
APPROVED	John D. Bloomfield	9/29/05

UNLESS OTHERWISE SPECIFIED
 ALL DIMENSIONS ARE IN INCHES
 MACHINED SURFACES FINISH N/A RMS MAX.
 REMOVE ALL BURRS .005 MAX. BREAK
 MACHINE CORNERS .005 MAX. FILLET R.
 TOLERANCES ON DECIMALS
 .XX ± .03 .XXX ± .005
 ANGLES ± 1° FRACTIONS ± 1/32
 DO NOT SCALE DRAWING

TIMES MICROWAVE SYSTEMS

TITLE:
 PROTECTIVE CAP ASSEMBLY
 FOR
 "TMA" FEMALE CONNECTOR

DWG. SIZE	B	DRWG. NO.	SD6250-254-SEE TAB	REV.	D
CODE IDENT.	68999	SCALE:	NONE	SHEET:	1 of 1