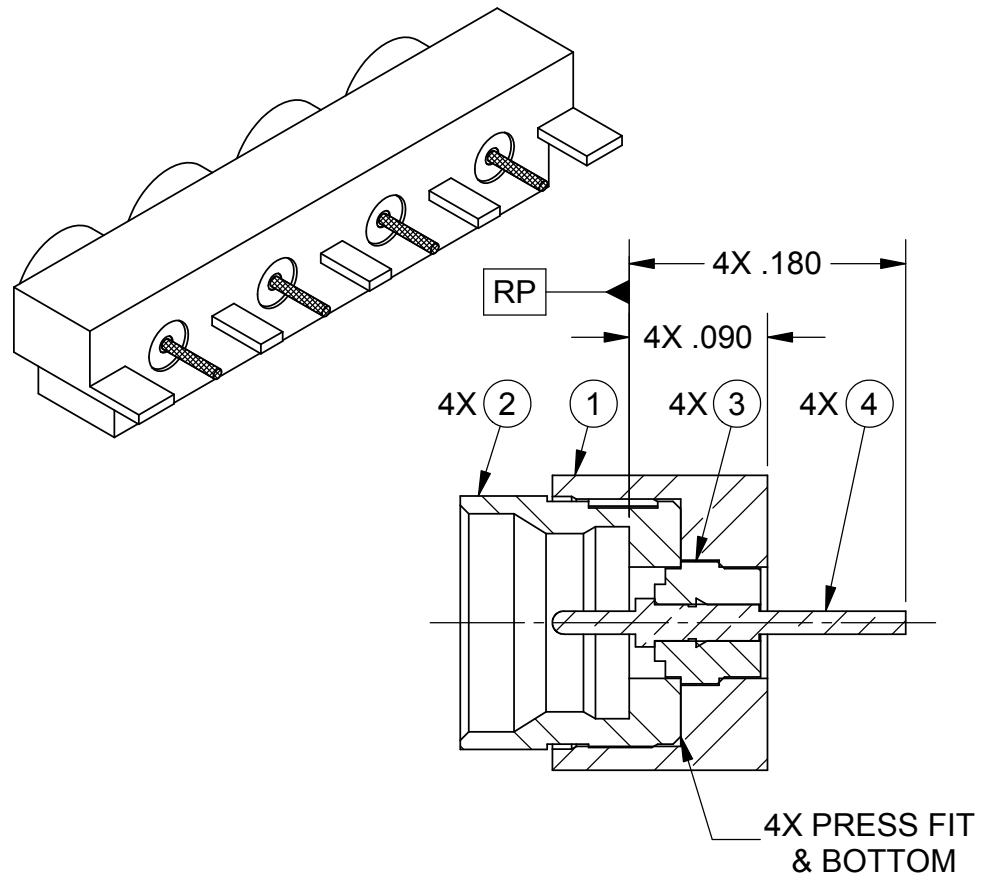
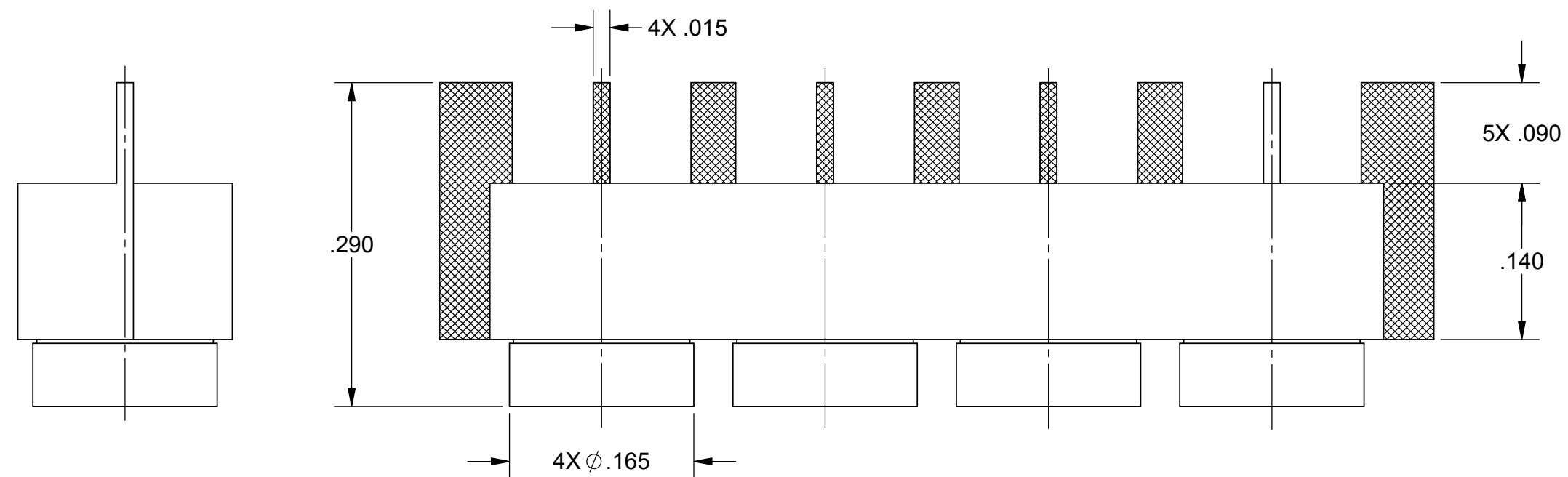
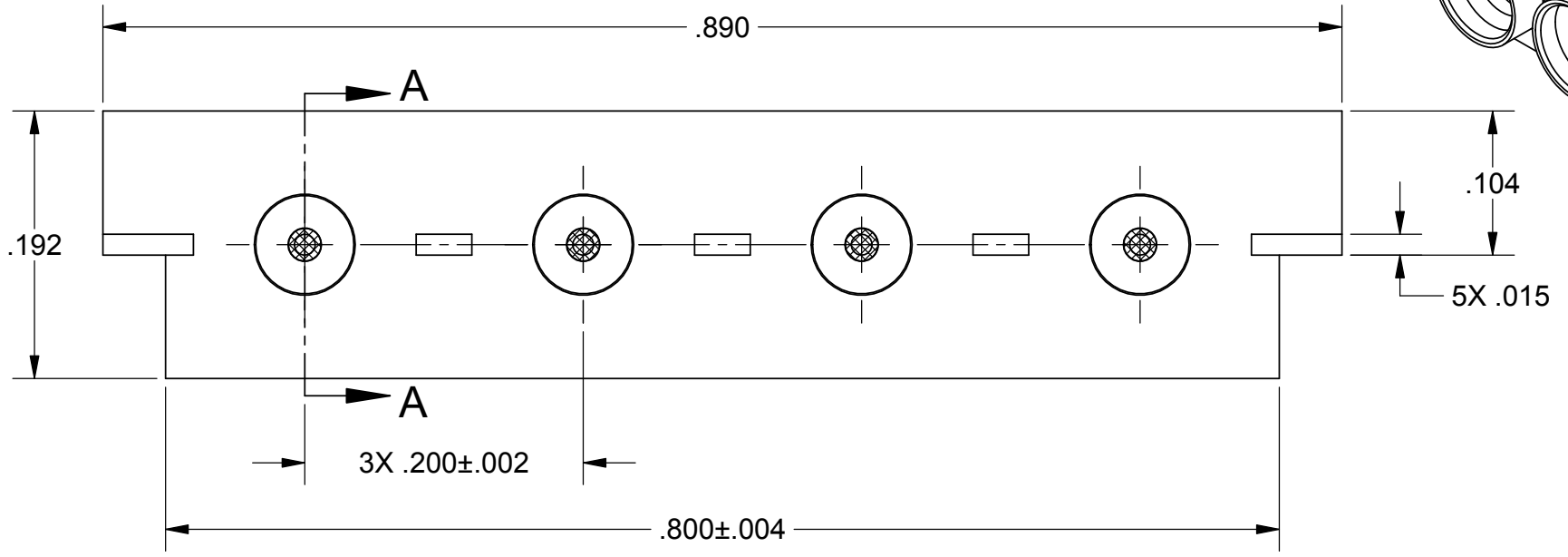


REVISION HISTORY			
REV	DESCRIPTION	DATE	APPROVED
-	NRN 41773	08/17	STW
A	DCN 47044	12/17	STW



SECTION A-A



- NOTES:
- MATING END DIMENSIONS PER MD-174.
 - PRE-TIN ITEM 1 PRIOR TO ASSEMBLY USING ITEM 7 SOLDER OR EQUIVALENT. PRE-TIN ITEM 4 PRIOR TO ASSEMBLY USING ITEM 6 SOLDER OR EQUIVALENT. ADD SOLDER TO AREAS SHOWN. ONLY SURFACES THAT MAKE CONTACT WITH BOARD WILL NEED SOLDER.

MATERIAL: PER BOM	DIMENSIONS ARE IN INCHES TOLERANCES:	UNLESS OTHERWISE SPECIFIED 1) ALL DIMENSIONS ARE AFTER PLATING. 2) BREAK CORNERS & EDGES .005 R. MAX. 3) CHAM. 1ST & LAST THREADS. 4) SURFACE ROUGHNESS 63 / MIL-STD-10. 5) DIA.'S ON COMMON CENTERS TO BE CONCENTRIC WITHIN .005 T.I.R. 6) REMOVE ALL BURRS	 Amphenol 2400 Centrepark West Drive, Suite 100 West Palm Beach, FL 33409
FINISH: PER BOM	FRACTIONAL: ±1/64 ANGULAR: X° ±1'0" X'X' ±15' DECIMAL: X ±.030 .XX ±.010 .XXX ±.005		
PROPRIETARY THE INFORMATION CONTAINED IN THIS DRAWING IS THE SOLE PROPERTY OF SV MICROWAVE, INC. ANY REPRODUCTION IN PART OR AS A WHOLE WITHOUT THE WRITTEN PERMISSION OF SV MICROWAVE, INC IS PROHIBITED.		INTERPRET DIMENSIONS AND TOLERANCES PER ASME Y14.5M - 1994 THIRD ANGLE PROJECTION	TITLE: SMP FD MALE 4-PORT PCB EDGE MOUNT DWG. NO. 9311-60038-TD
		DRAWN: JDT 08/17/17 CHECKED: STW 08/17/17 APPROVED: STW 08/17/17 E.M. SIMULATION: N/A	SIZE B CAGE CODE 95077 SCALE: 8:1

MARK MIN. PACKAGE 9311-60038-TD AND (DATE CODE)
PER 400-05-004, TYPE 8

ITEM NO.	PART NUMBER	PLATING 400-01-	QTY.	DESCRIPTION	LEVEL				
					0	1	2	3	4
1	071-12-008	209	1	MULTIPOINT BODY		X			
2	012-12-411	209	4	SMP FD SHROUD		X			
3	244-12-041	-	4	INSULATOR		X			
4	033-12-038	209	4	CONTACT		X			
5	MD-174	-	1	MATING END DIMENSIONS	X				
6	400-07-048	-	A/R	Sn96 SOLDER SPEC.	X				
7	400-07-054	-	A/R	Sn96 SOLDER PASTE	X				
8	3465-W	-	.009	TRAY		X			
9	3300-L	-	.009	LID		X			

DESIGNED FOR:	SV Microwave, Inc.
CUSTOMER P/N:	
REVISION:	

BILL OF MATERIALS

REV. **A**

SHEET 2 OF 2



2400 Centrepark West Drive
Suite 100
West Palm Beach, FL 33409

CAGE CODE
95077

ASSY. NO. **9311-60038-TD**